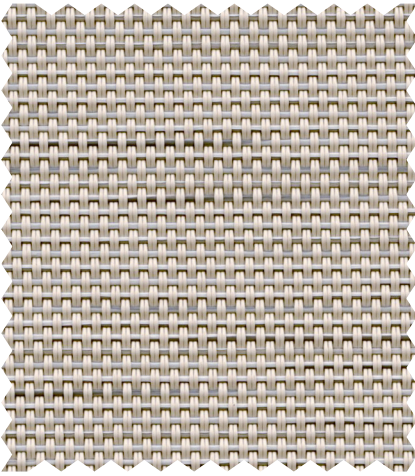


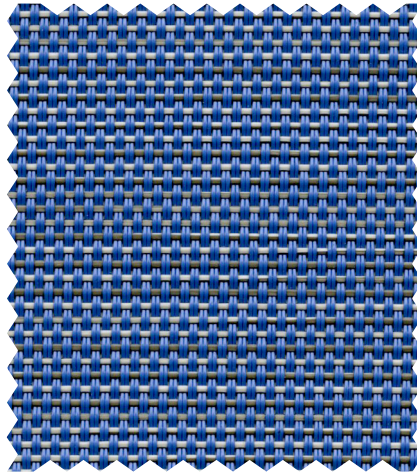
# 2020 Stock Additions

Phifertex®  
Slingable Fabric

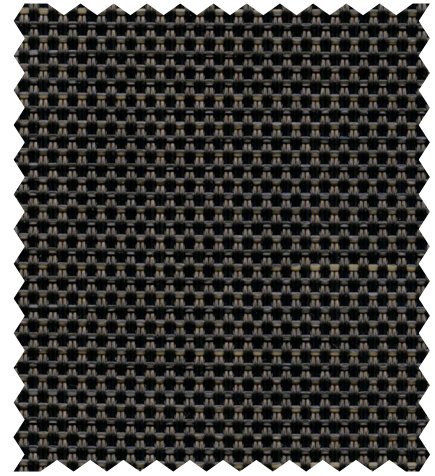




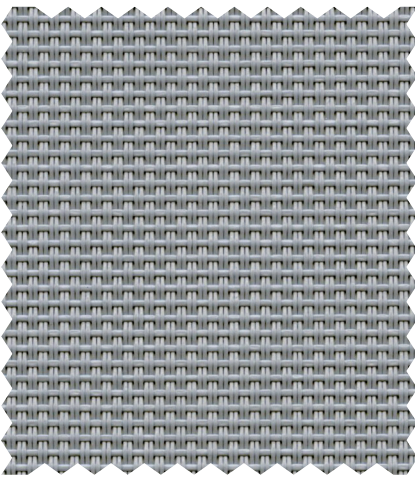
Madres Tweed Putty | NCF  
3040724 | Construction: 42x14



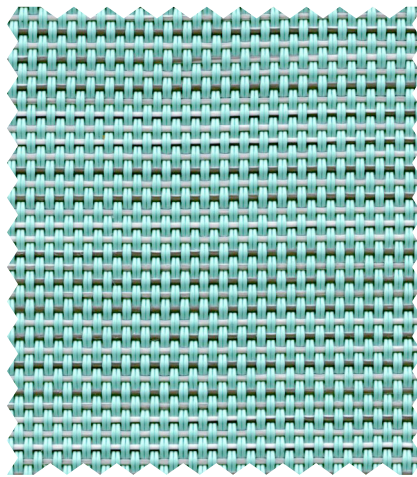
Madres Tweed Cornflower | LKU  
3040723 | Construction: 42x14



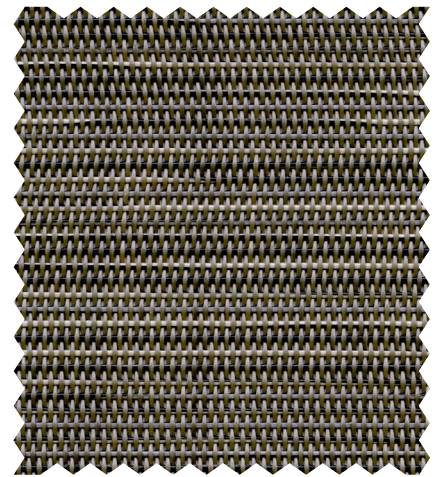
Madres Tweed Ember | ZEQ  
3040725 | Construction: 42x14



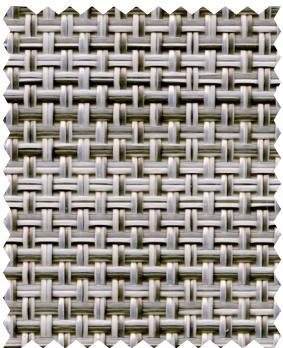
Flannel | ZEM  
3040726 | Construction: 42x14



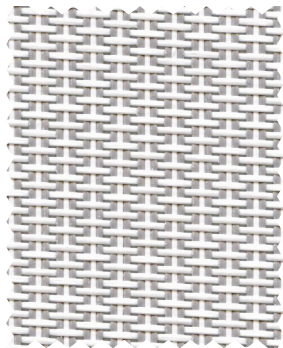
Madres Tweed Mint | LKT  
3040722 | Construction: 42x14



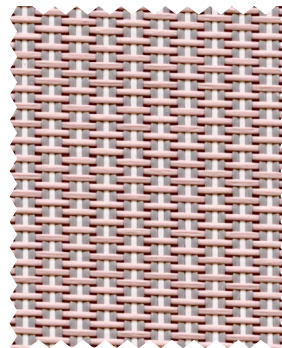
Dupioni Brindle | NCE  
3040727 | Construction: 42x14



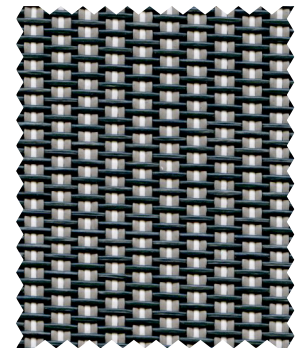
Creel Birch | ZEN  
3040731 | Construction: 22x22



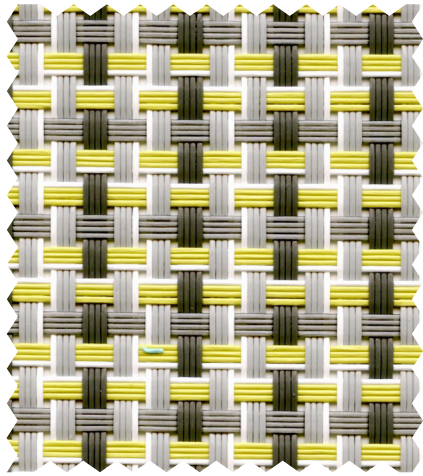
Nova Frost | OKY  
3040728 | Construction: 22x22



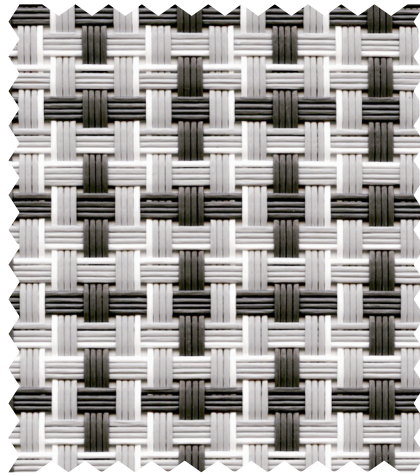
Nova Blush | KDK  
3040729 | Construction: 22x22



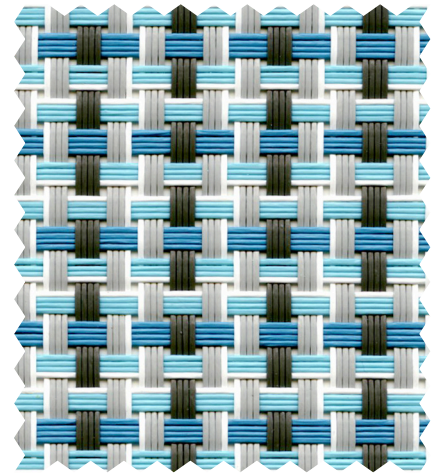
Nova Slate | LKR  
3040730 | Construction: 22x22



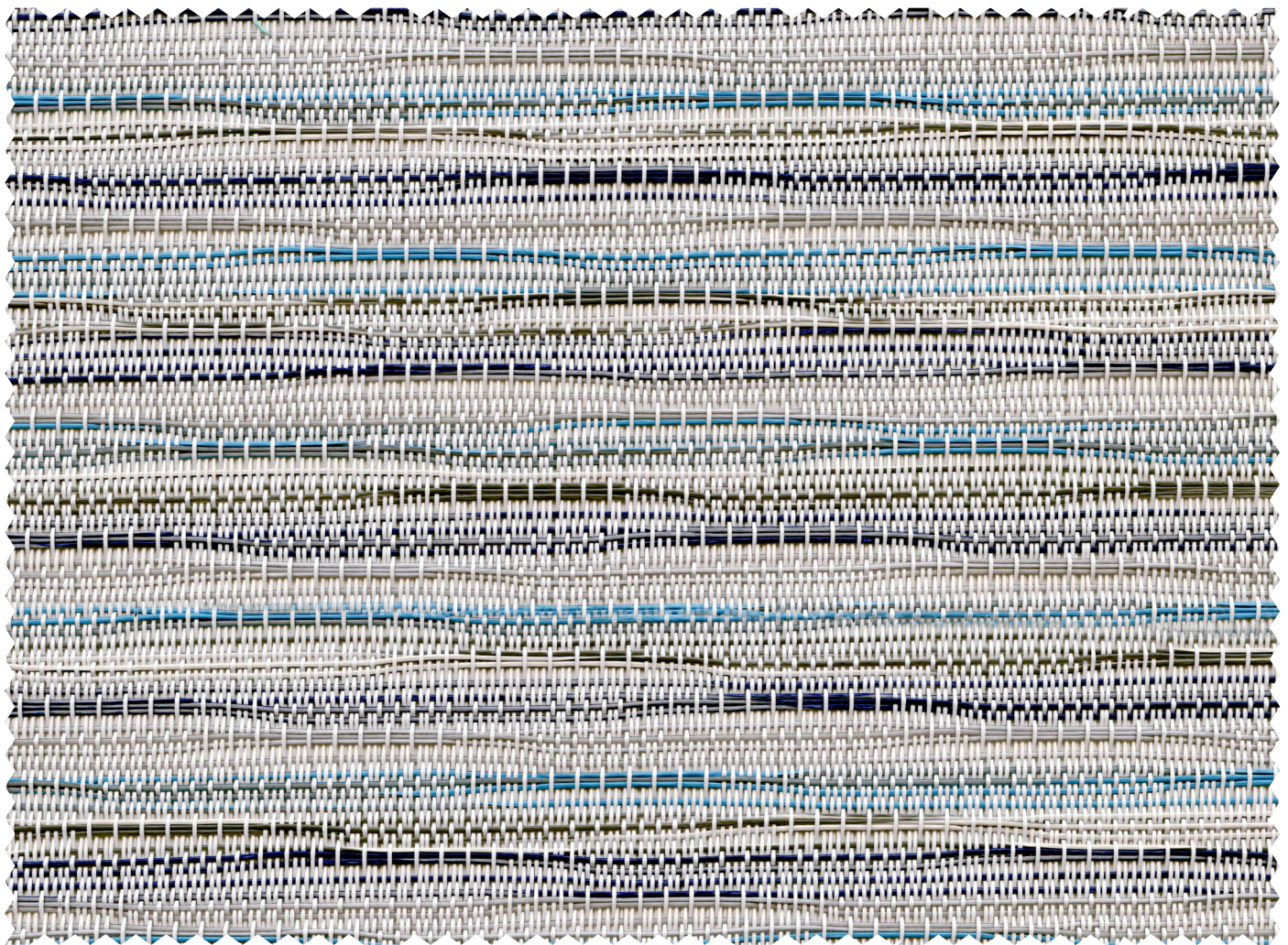
Blazer Lemon | 727  
3040732 | Construction: 25x25



Blazer Zinc | ZEP  
3040734 | Construction: 25x25



Blazer Surf | LKS  
3040733 | Construction: 25x25



Broadway Wave | LKQ  
3040709 | Construction: 42x16

## FABRIC FEATURES

### DURABILITY/CLEANABILITY

Functional and durable, Phifertex fabrics offer excellent performance while withstanding spills, splatters and the hustle and bustle of high traffic areas. These fabrics are easy to maintain – easily cleaned with soap and water or 50/50 bleach to water solution.

### WARRANTY

Phifer offers a 3-year limited warranty for Phifertex Outdoor Fabrics. This warranty covers the fabric becoming non-functional due to loss of dimensional stability from exposure to conditions including sunlight, mildew, rot and normal atmospheric conditions. The warranty does not cover damage to the fabric from any source nor does it cover gradual fading or discoloration from atmospheric pollution or other debris. This warranty remains in effect for 3 years from the date of purchase. Phifer will provide new fabric, free of charge, to replace the non-functioning fabric. This warranty does not cover the cost of labor or other consequential or incidental expenses.



### GREENGUARD

GREENGUARD Certification ensures products have met some of the world's most rigorous and comprehensive standards for low emissions of volatile organic compounds (VOCs) into indoor air. Phifer was the first manufacturer in the outdoor fabric industry to achieve GREENGUARD certification. Certification is completely voluntary and ensures that the highest industry standards are being applied to maintain indoor air quality for the health and safety of building occupants.



### MICROBAN®

Phifertex fabrics are the only outdoor furniture fabrics in the world to include Microban protection. Microban antimicrobial protection works continuously to inhibit the growth of bacteria, mold and mildew that can cause stains, odors and product deterioration.



- Microban antimicrobial protection is infused into Phifertex fabrics for lasting protection that won't wash off or wear away for the lifetime of the product.
- Phifertex fabrics infused with Microban antimicrobial technology are ideal for any commercial or residential environment where microbes are a concern, including healthcare, hospitality, home, office, schools and institutions.

### FLAME RETARDANCE

- National Fire Protection Association, NFPA No. 101, "Life Safety Code", Class "A" rating. (Tested in accordance to ASTM E84, Surface Burning Characteristics of Building Material.) 17x11 (ASTM E84-16), 25x25 (ASTM E84-15b), 37x15 (ASTM E84-16), Plus (ASTM E84-15b)
- International Building Code (IBC), Section 803.1.1, Class "A" rating (Tested in accordance to ASTM E84).
- Upholstered Furniture Action Council Fabric Classification Test Method 1990 (UFAC) - Class "I" Rating.
- Federal Motor Vehicles Safety Standards, Section 571.302, Standard Number 302 (FMVSS 302), Flammability of Interior Materials.
- California Technical Bulletin 117-2013, Section 1, Cover Fabric Test.

